

Safety Lockout Range



We take the worry out of
protecting what's valuable to you.

Lockwood: *no worries*®



ASSA ABLOY

25YEAR

MECHANICAL
WARRANTY

www.lockweb.com.au

Contents



214 and 215 Series

Aluminium Case Padlocks

page 3



215P Series

Plastic Body Padlocks

page 5



225 Series

Padlocks

page 7



412 Series

Padlocks

page 9



Safety Lockout

Safety Lockout Hasp

page 11



Safety Lockout

312 Covered Supervisors
Hasp

page 13



Safety Lockout Range Accessories

page 15



Trailer Air Coupling Lock

page 17

214 and 215 Series Aluminium Case Padlocks



The Lockwood 214 and 215 Aluminium Series Padlocks are a range of durable, rugged and lightweight 40mm aluminium body padlocks with full commercial grade special keying. The range has been specifically designed to meet the requirements of commercial and industrial applications. Along with a range of up to eight clearly identified coloured jackets, it is ready to be custom marked to make lock identification easy.

Features and Specifications

- Self latching double ball locking
- Can be converted from self latching to deadlocking (key retained) by simply relocating the cam plate pin in the cylinder assembly
- Covers available in eight easily identified colours.

Product Details

Materials	Body: Heavy duty, aluminium body extrusion. Shackle: Stainless steel.
Function	Spring loaded shackle, available with latching function where the key can be removed with the shackle in the open position (L) or deadlocking function where the key is retained and can only be removed with the shackle in the locked position (D).
Finish	Body: Red anodized aluminum. Shackle: Natural material.
Cylinders	Rekeyable 334 type padlock cylinder. Inline pin cylinders can be keyed to 5 or 6 pins.
Shackles	214 Model: 5.0mm diameter, 19 & 50mm lengths. 215 Model: 6.4mm diameter, 19 & 50mm lengths.
Special Keying	Locks can be keyed to a number of controlled and / or specially keyed systems. These range from legally protected keys to protect against unauthorised duplication and can also include specially designed keying systems such as master key systems. This allows for different levels of mechanical access control.

Bulk Locksmiths versions are available.

Note: Custom marking is available. Pricing and availability on application.

Standards and Compliance

SP3–6

Physical Security grades are employed for padlocks. These grades are defined in part by the effective differs and key combinations. Padlocks Physical Security (SP) grade range from 3-6.

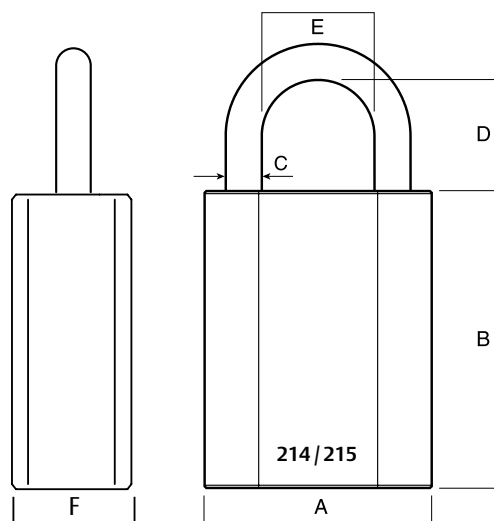


OUTDOOR

Environments that are often wet and/or subject to slight pollution by sulphur dioxide, acid, alkali or salt, including some particularly damp interiors and the majority of exterior environments.

All products are designed and tested to the Australian Padlock Standard AS4145.4 2002 and are rated for both security and corrosion resistance.

214 and 215 Series Aluminium Case Padlocks



Product Details – Dimensions and Standards and Compliance Ratings

	Physical Security Rating	Corrosion Resistance Rating	A	B	C	D	E	F
214A40/619	SP4	C4	40	52	5.0	19	21	19
214A40/650	SP3	C4	40	52	5.0	50	21	19
215A40/619	SP6	C4	40	52	6.4	19	20	19
215A40/650	SP5	C4	40	52	6.4	50	20	19

Available Keying Configurations

	RKA	BK	5KA	5KD	6KA	6KD	6MK	DRKA	D5KA	D5KD	D6KA	D6KD	D6MK
214A40/619	•	•	•	•	•	•	•	•	•	•	•	•	•
214A40/650	•	•	•	•	•	•	•	•	•	•	•	•	•
215A40/619		•	•	•	•	•	•	•	•	•	•	•	•
215A40/650		•	•	•	•	•	•	•	•	•	•	•	•

Padlocks Ordering Procedure

Padlock Series	Body Material	Body Size	Shackle Material
215	A	40	8

Shackle Opening	Function
50	L

Format	Colour
1	2

PackType & Keying
5KD

Padlock Series	Body Size
214 Series	214
215 Series	215
Body Material	Shackle Material
Aluminium	Brass
	Stainless Steel

Shackle Opening	Function
Nominal Size in mm	25
Nominal Size in mm	50
Function	Shackle Opening
Latching	L
Deadlocking	D

Format	Colour
Window Cover	1
Colour	Format
Red	1
Orange	2
Yellow	3
Green	4
Blue	5
Purple	6
White	7
Black	8

Pack Types and Keying	
Keyed Alike	KA
5 Pin Keyed Alike	5KA
5 Pin Keyed to Differ	5KD
6 Pin Keyed Alike	6KA
6 Pin Keyed to Differ	6KD
6 Pin Master Keyed	6MK
Bulk	BK
GEN6T Master Keyed	G6M
MT5+ Master Keyed	MT5+

Note: For deadlocking function insert "D" in front of keying suffix. E.g. D6KD.

215P Series Plastic Body Padlocks



The Lockwood 215P Plastic Body Series Padlocks have been specifically designed for the electrical and mining safety lockout industries. When specified with a polymer shackle the padlock becomes completely non-conductive allowing for safety lockout within electrical applications.

Features and Specifications

- Excellent corrosion resistance
- All components are non-sparking
- All components are non-magnetic
- Meets OH&S guidelines of one employee, one padlock and one key
- Available in six colours
- Includes write on “Danger” label

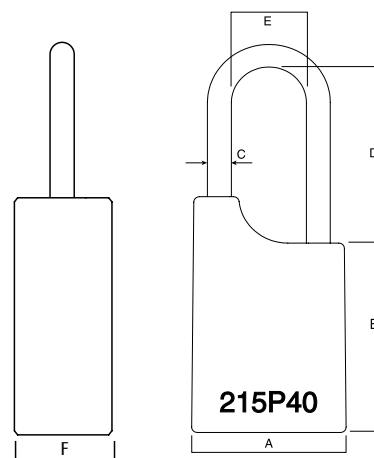
Product Details

Materials	Body: Plastic. Shackle: Plastic or brass.
Function	Spring loaded shackle with deadlocking function where the the key is retained and can only be removed with the shackle in the locked position.
Finish	Body: Coloured plastic. Shackle: Natural material.
Cylinders	Rekeyable 334 type padlock cylinder. Inline pin cylinders can be keyed to 5 or 6 pins.
Shackles	Available in 6mm diameter, 50mm long, brass and polymer shackles.
Special Keying	Locks can be keyed to a number of controlled and / or specially keyed systems. These range from legally protected keys to protect against unauthorised duplication and can also include specially designed keying systems such as master key systems. This allows for different levels of mechanical access control.

The standard key supplied is the 6 pin restricted E3 profile. The key head is marked ‘Safety Do Not Copy’.

Bulk Locksmiths versions are available.

215P Series Plastic Body Padlocks



Specifications

Dimensions (mm)

Part Number	A	B	C	D	E	F
215P40/850	40	52	6	50	20	19

Available Keying Configurations

	6KA	6KD	BK
215P40/850	•	•	•
215P40/250	•	•	•
215P40/225	•	•	•

Padlocks Ordering Procedure

Padlock Series	Body Material	Body Size	Shackle Material	Shackle Opening	Colour	PackType & Keying
215	P	40	8	50	1	6KD

Padlock Series	Body Width	Shackle Opening	Pack Types and Keying
215 Series	Nominal Size in mm	Nominal Size in mm	6 Pin Keyed Alike 6KA 6 Pin Keyed to Differ 6KD 6 Pin Master Keyed 6MK Bulk BK
215	40	50	
Body Material	Shackle Material	Colour	
Plastic	Brass	Red	
P	Polymer	Orange	
		Yellow	
		Green	
		Blue	
		White	
		Black	

225 Series Padlock



The Lockwood 225 Series Padlock is a zinc diecast padlock with a powdercoated finish.

The 225 padlock is primarily used with the 003 key code for the fire industry.

The padlock is also available with a brown powder coat finish for use in other applications.

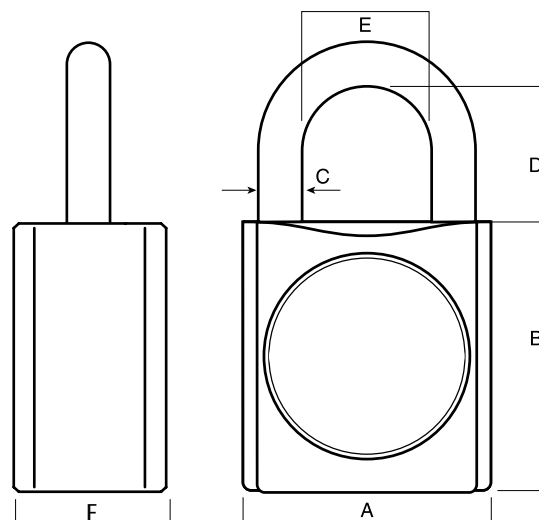
Features and Specifications

- Powder coated red body
- Hardened steel chrome plated shackle

Product Details

Materials	Body: High purity, diecast, zinc alloy. Shackle: Hardened steel.
Function	Spring loaded shackle with latching function where the key can be removed with the shackle in the open position.
Finish	Body: Red powder coat (003 version) or Brown powder coat. Shackle: Chrome plate.
Cylinder	Integrated 5 disc barrel.
Shackles	6.4mm diameter, 19mm long.

225 Series Padlock



Product Details– Dimensions

	A	B	C	D	E	F
225/40/119	38	38	6.4	19	19.5	20

Available Keying Configurations

	RKA	LS	KA	KD	003
225/40/119	•	•	•	•	•

Note: Red Fire Industry version shown keyed to 003 key.
Part No: 225/40/119/003

Padlocks Ordering Procedure

Padlock Series	Body Width	Shackle Material	Shackle Opening	PackType & Keying
225	40	1	19	KD

Padlock Series	Body Width	Shackle Opening	Pack Types and Keying
225 Series	225	Nominal Size in mm 40	Locksmith LS
		Nominal Size in mm 19	5 Disc Keyed to Differ KD
			Keyed Alike KA
			Random Keyed Alike RKD
			Fire Industry Code 003

412 Series Padlocks



The Lockwood 412 Series Safety Lockout Padlocks are a durable and rugged brass padlock that has been specifically designed to meet the requirements of safety lockout applications.

With advancements in coding capacity and legally patent protected keyways available, the 412 Series padlock is a superior option for securing your organisation and assets.

The 412 padlock is highly customisable, through a wide range of coloured jackets and options for laser etching.

Features and Specifications

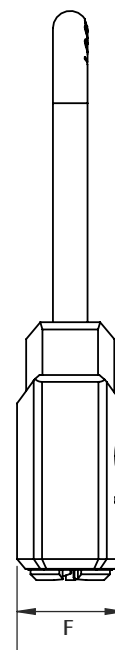
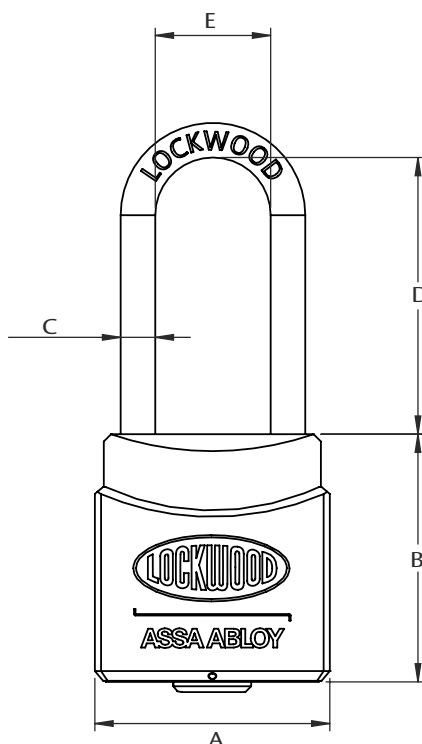
- Legally protected keyways
- Superior coding capacity
- Primarily used for safety lock out applications
- 6 pin tumbler mechanism
- Self latching or deadlocking (key retained)
- Dual shackle locking points
- Coloured covers available for easy identification

Product Details

Materials	Body: Solid brass. Shackle: Stainless steel.
Function	Spring loaded shackle, available with latching function where the key can be removed with the shackle in the open position (L) or deadlocking function where the key is retained and can only be removed with the shackle in the locked position (D).
Finish	Body: Natural material. Shackle: Natural material.
Cylinders	Integrated cylinder, 6 pins.
Shackles	4.8mm diameter, 38mm and 50mm lengths.

Note: Custom marking is available. Pricing and availability on application.

412 Series Padlocks



Product Details– Dimensions

	A	B	C	D	E	F
412##38	32	34	4.8	38	16	15
412##50	32	34	4.8	50	16	15

Available Keying Configurations

	KD	KA	MK	LS
412##38	•	•		•
412##50	•	•		•

Note: To ensure key numbers are not duplicated padlocks must be ordered to a site specific key system. If padlocks are ordered without a site specific key system number quoted on the order, key numbers may be duplicated.

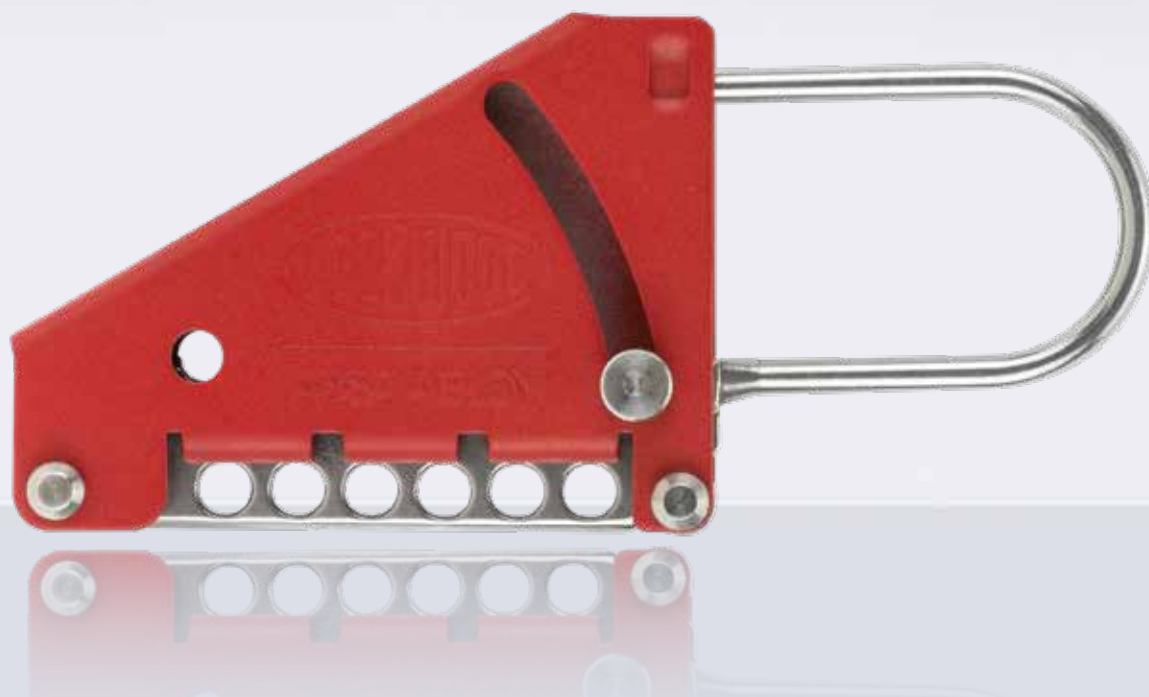
Padlocks Ordering Procedure

Padlock Series	Profile	Function	Shackle Opening	Etching	Cover Colour	Keying
412	F	D	50	E1	RW	KD

Padlock Series	Function	Cover Colour	Keying
412 Series	Deadlocking D	Red Solid RD	Keyed to Differ KD
	Latching L	Red Window RW	Keyed Alike KA
		Orange Window OR	Locksmith LS
		Yellow Window YE	
		Green Window GR	
		Blue Window BL	
		Purple Window PU	
		Pink Window PI	
		White Window WH	
		Black Solid Cover BK	
		Black Window BW	
		Grey Window GY	
		Red Window with "Danger Do Not Enter" DD	

Profile	Shackle Opening (mm)	Etching
F profile	38mm 38	Single Sided E1
	50mm 50	Double Sided E2
		Leave blank if no etching is required

312 Safety Lockout Hasp



Lockwood's unique patented Safety Lockout Hasp design provides protection for various portable installations suitable for both single and multipoint* locking applications. This product provides maximum protection when used in conjunction with Lockwood's 312 Series padlocks and ensures equipment can be isolated and not activated again until the repairs or maintenance are completed.

The locked out device cannot be reactivated until all workers have signed off on their portion of the project and removed their padlock from the hasp.

Lockwood's guarantee of quality means that you can be confident in your choice of Lockwood Safety Lockout products.

*When used in conjunction with 312 cables sold separately.

Product Details

Materials	Shackle: Stainless Steel. Locking points: Stainless Steel. Rivets: Stainless Steel. Spring: Stainless Steel. Body: Galvanised Steel.
Functions	Single action shackle release trigger. Piggy back function.
Finish	Powdercoat red.
Accessories	Red PVC coated cables are available separately for multi point locking in lengths of 1.5m, 6m, and 10m.

312 Safety Lockout Hasp

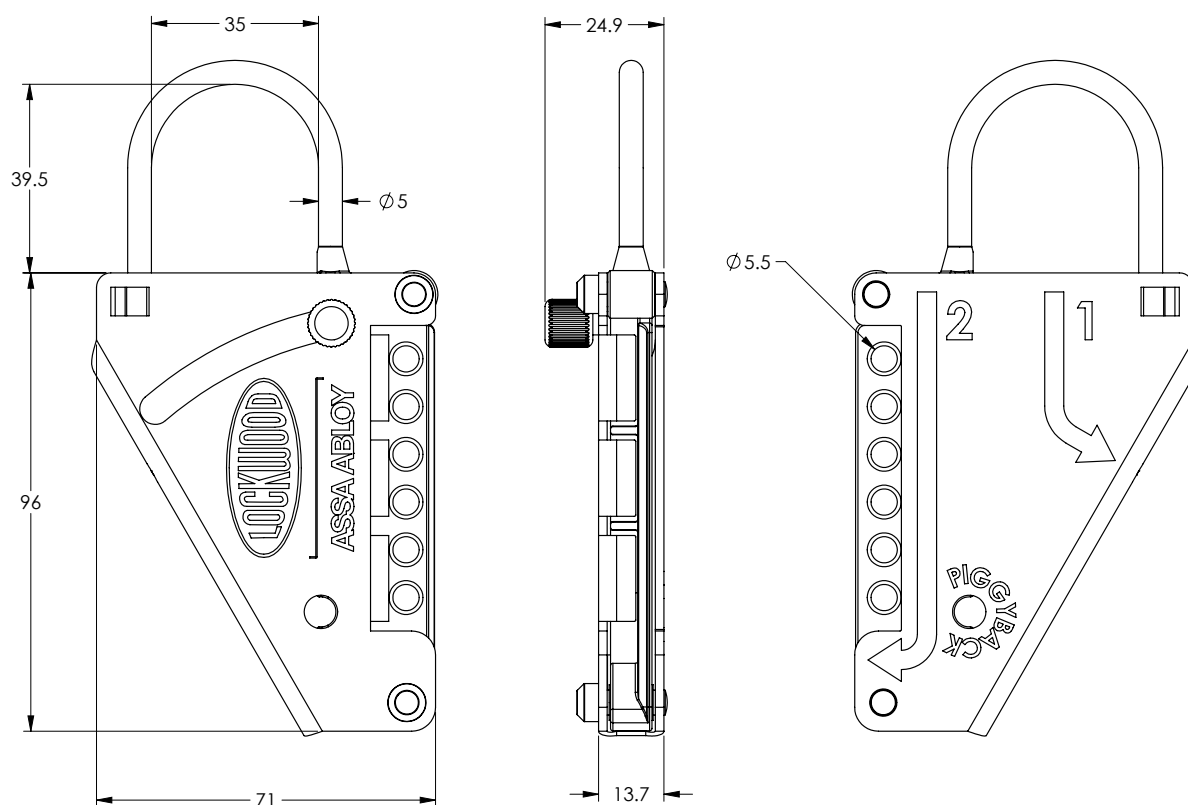
Features and Specifications

- Multi-function Safety Lockout Hasp with the unique design cable locking feature
- Hardened Stainless Steel hasp
- Self-latching
- Single action shackle release trigger
- Six padlock holes accepts 312 Series padlocks
- Heavy duty stainless steel return spring
- Piggy back function
- Stainless steel body rivets
- Highly visible red powder coat finish
- Multi point locking (when used in conjunction with cable)

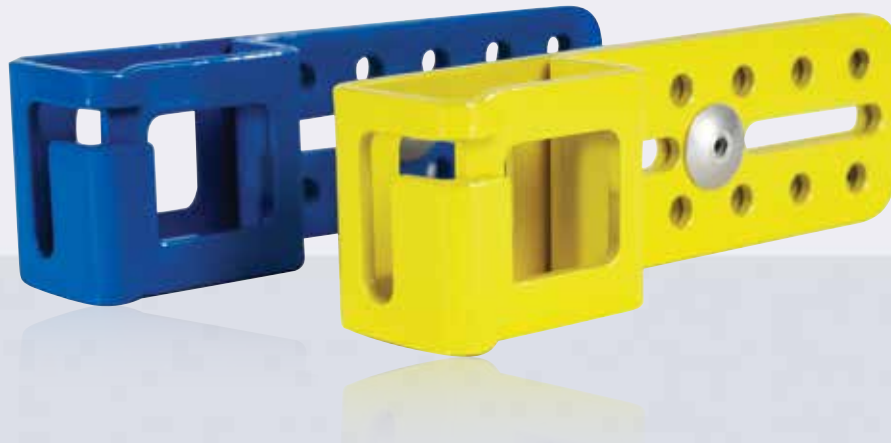
Part Numbers

Part Number	Description
312HASP/SS	312 Series safety lockout hasp
312CABLE/R10000	312 Safety lockout cable red PVC (10M)
312CABLE/R6000	312 Safety lockout cable red PVC (6M)
312CABLE/R1500	312 Safety lockout cable red PVC (1.5M)

Dimensions



312 Covered Supervisors Hasp



This product is specifically designed for use with Lockwood's 312 Series padlocks and ensures equipment can be isolated and not activated again until repairs or maintenance is completed.

The locked out device cannot be reactivated until the Supervisors Padlock is unlocked. The Supervisors padlock is only accessible after all workers have signed off on their portion of the project and have removed their padlock from the hasp.

The hasp will lock over a 312 Series Padlock with 10 lockout positions and a window to view the laser etched details on the supervisor's padlock. It is available in two colours, yellow and blue to represent day shift and night shift workers.

Lockwood's guarantee of quality means that you can be confident in your choice of Lockwood Safety Lockout products.

Features

- Laser etched details window
- 10 lock out positions
- Powder coated yellow and blue finish options
- Durable zinc plated steel construction
- Cut-outs for reduced weight

*312 padlocks sold separately.

Product Details

Materials

Body: Zinc Plated Steel.
Rivets: Aluminium / Steel.

Finishes

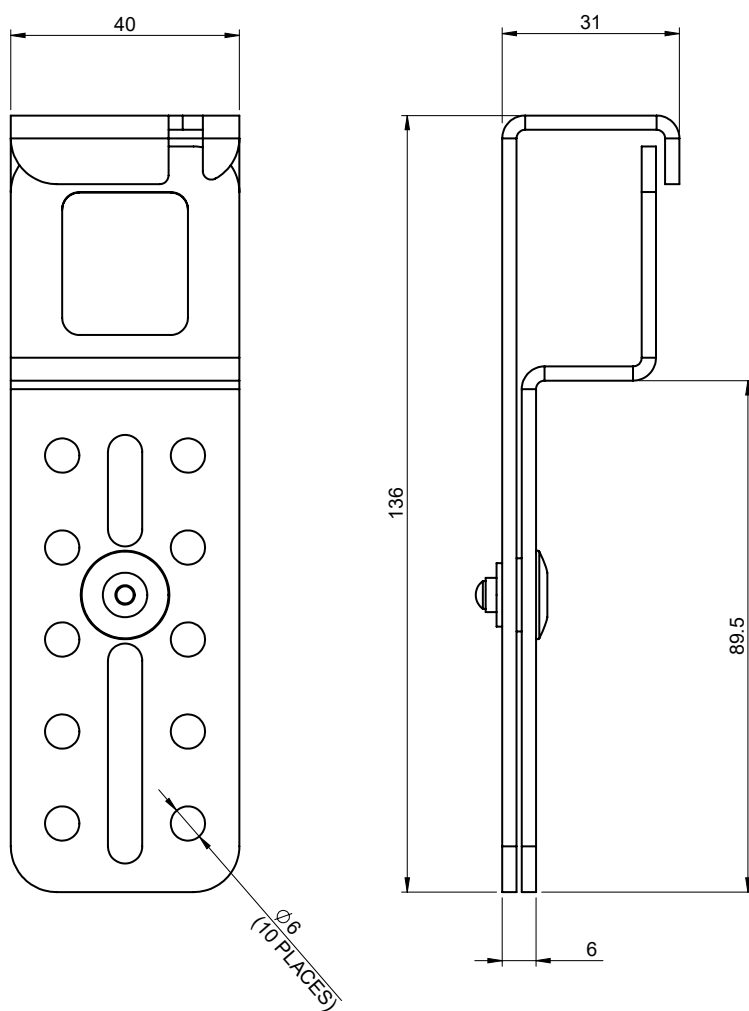
Powder coat colours blue (BL) & yellow (YE).

312 Covered Supervisors Hasp

Part Numbers

Part Number	Description
312HASP/CS10BL	312 Covered Supervisor Hasp 10 Hole Blue
312HASP/CS10YE	312 Covered Supervisor Hasp 10 Hole Yellow

Dimensions



312 Series Safety Lockout Range - Accessories

Padlock Holder for 4 Padlocks

Part Number	312HOLDER/4
Finish	Black

The Lockwood 312 Holder/4 has the capacity to hold four 312 Lockwood Padlocks (19 mm – 80 mm shackle), a retractable 312 Keyline and 312 Series Safety Jaws.

The carry case is designed to be easily fitted onto your belt. The 312 Holder also includes a clear face compartment which makes identification easy.

Note: Padlocks and Accessories are ordered separately.



Padlock Holder for 6 Padlocks

Part Number	312HOLDER/6
Finish	Black

The Lockwood 312 Holder/6 has the capacity to hold six 312 Lockwood Padlocks (19 mm – 80 mm shackle), a retractable 312 Keyline and the 312 Series Safety Jaws.

The carry case is designed to be easily fitted onto your belt. The 312 Holder also includes a clear face compartment which makes identification easy.

Note: Padlocks and Accessories are ordered separately.



Retractable Key Holder

Part Number	312KEYLINE
Finish	Chrome Plate/Black

This compact retractable key holder incorporates a spring loaded mechanism, a robust steel cable line and key ring.

The built in clip allows easy fitting onto the 312 Holder, or can be used independently. The 312 Keyline ensures keys are easily accessible when needed.

Note: Padlocks and Accessories are ordered separately.



312 Series Safety Lockout Range - Accessories

Safety Lockout Jaws

Part Number	Description
312JAWS	25mm - 6 Holes
312JAWS/7	25mm - 7 Holes

The safety lockout jaws ensure that machinery stays 'locked out' until each person removes his/her padlock from the hasp. This prevents any accidental re-energising of machinery before crews have completed their work.

The 312 Jaw holds up to six 312 padlocks and is made from hardened steel with a vinyl coating.

Note: Padlocks and Accessories are ordered separately.



Trailer Air Coupling Lock



The Lockwood Air Coupling Locks have been designed for the securing of Truck (Trailer) and industrial compressed air line applications. When attached to the air line this product provides security and safety.

Security: Whereby the air brakes air line fitting is effectively sealed when the lock is attached, preventing connection to the opposing fitting. In the case of a Trailer application this reduces the risk of the trailer being connected to a truck without authorisation.

Safety: In an industrial application the sealing of the air line can reduce the risk of an accidental connection of equipment when shut down for maintenance etc.

The Lockwood Air Coupling Lock range consist of two series, the AL Series and the TL Series.

AL Series

The AL Series comes with an integrated cylinder that can be keyed to most restricted key systems.

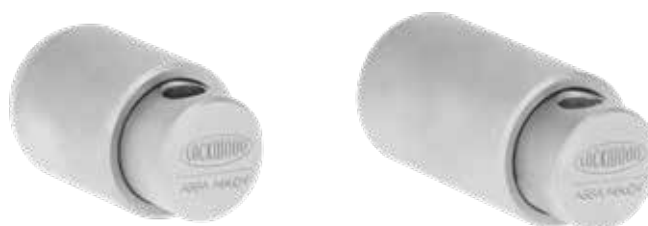
It is available in two models to suit both the ½"NPT female air coupling and the ½" NPT male air coupling.



TL Series

The TL Series is locked with a padlock. The locking point allows for use of a padlock with under 10mm shackle diameter.

It is available in two models to suit both the ½"NPT female air coupling and the ½" NPT male air coupling.



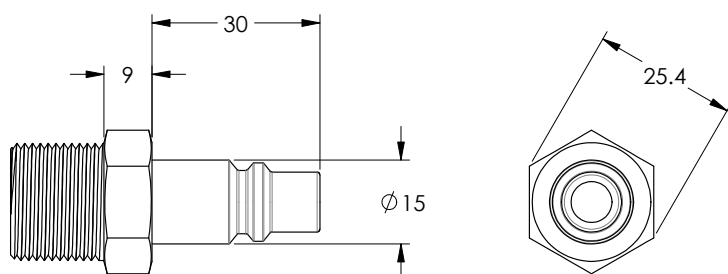
Air Coupling Types

Air Coupling Types

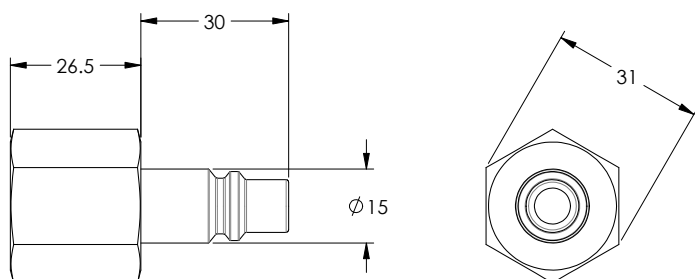
Air Couplings come in different sizes, the AL & TL Series are designed to work with ½ inch couplings;

- 1/2" NPT male coupling = AL Series 63 or TL Series 1/2IN
- 1/2" NPT female coupling = AL Series 81 or TL Series 28MM

Note: Air Couplings are not supplied.



½" NPT male thread coupling



½" NPT female thread coupling

AL Series



AL Series

The AL Series comes with an integrated cylinder that can be keyed to most restricted key systems.

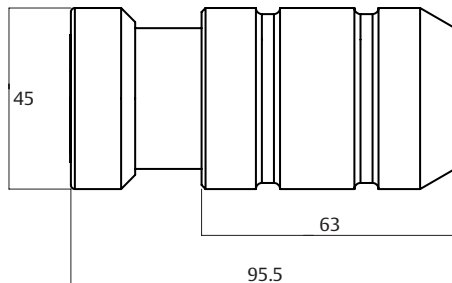
It is available in two models to suit both the ½" NPT female air coupling and the ½" NPT male air coupling.

Product Details

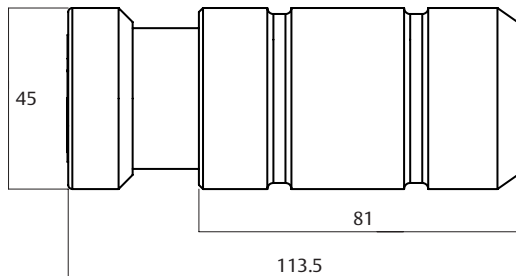
Dimensions	Diameter: 45mm.
	Length: <ul style="list-style-type: none"> • AL Series 63 - 96mm. • AL Series 81 - 114mm.
Materials	Inner Sleeve: Mild steel. Outer Sleeve: Case hardened steel.
Function	Spring loaded function allowing for quick snap-on attachment to ½ inch air coupling fittings.
	Locked and unlocked by integrated cylinder. Key retained in unlocked position.
Finish	Chrome Plate (CP).
Cylinder	AL Series - 577 Synergy 3500 Series dual access lower cylinder.
Special Keying	Locks can be keyed to a number of controlled and/or specially keyed systems. These range from legally protected keys to protect against unauthorised duplication and can also include specially designed keying systems such as master key systems. This allows for different levels of mechanical access control.

AL Series

AL Series 63



AL Series 81



Part Numbers

Part Number	Description	Coupling Type
AL1/2/63MM##	AL Series 63 Air Coupling Lock	½" NPT male thread coupling
AL1/2/81MM##	AL Series 81 Air Coupling Lock	½" NPT female thread coupling

Note: ## in part number is exchanged for keying type.

KD = Keyed to Differ (Standard C4 profile 6 pin)

KA = Keyed Alike (Standard C4 profile 6 pin)

MK = Master Keyed (Standard C4 profile 6 pin)

TL Series



TL Series

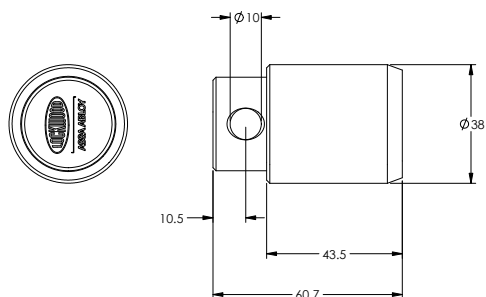
The TL Series is locked with a padlock. The locking point allows for use of a padlock with under 10mm shackle diameter.

It is available in two models to suit both the ½”NPT female air coupling and the ½” NPT male air coupling. •

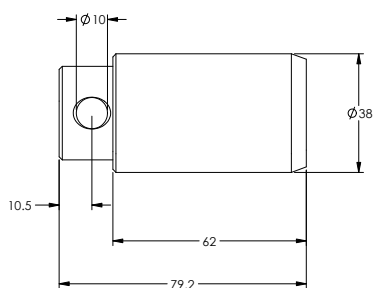
Product Details	
Dimensions	Diameter: 38mm. Length: <ul style="list-style-type: none"> TL Series 1/2IN – 59mm. TL Series 28 – 79mm.
Materials	Inner Sleeve: Mild steel. Outer Sleeve: Case hardened steel.
Function	Spring loaded function allowing for quick snap-on attachment to ½ inch air coupling fittings.
Finish	Satin Chrome Pearl (SP).
Locking	The TL Series is locked by padlock. Padlocks are available separately and not included. Suits padlocks with a shackle diameter of under 10mm and minimum clearance height of 38mm.

TL Series

TL Series 1/2IN



TL Series 28MM



Part Numbers

Part Number	Description	Coupling Type
TL1/2IN	TL Series 1/2IN Air Coupling Lock	½" NPT male thread coupling
TL28MM	TL Series 28MM Air Coupling Lock	½" NPT female thread coupling

Note: Padlocks are available separately and not included.



ASSA ABLOY

Lockwood is the leading brand in the Australian locking industry. With an established reputation for high quality products, this iconic brand provides a wide range of locking solutions to residential housing, commercial building and industrial application markets. Lockwood is supported by an extensive distribution and after-sales support network. Our customers include retailers, architects, trade and industrial personnel, locksmiths and security dealers.

ASSA ABLOY is the global leader in door opening solutions, dedicated to satisfying end-user needs for security, safety and convenience.

ASSA ABLOY is represented in all major regions, in both mature and emerging markets, with leading positions in Australia, Europe and North America.

**25YEAR
MECHANICAL
WARRANTY**

The Lockwood 25 Year Mechanical Warranty

Our belief that we manufacture the finest premium products available in today's market place is backed by the Lockwood 25 Year Mechanical Warranty, ensuring that Lockwood continues to keep Australians safe by delivering security and peace of mind.

For warranty terms and conditions, please visit www.lockweb.com.au or call **1300WARRANTY**

ASSA ABLOY Australia Pty Ltd
235 Huntingdale Road
Oakleigh, Victoria, 3166
Australia

1300 LOCK UP (1300 562 587)
lockweb.com.au

ASSA ABLOY New Zealand Ltd
6 Armstrong Road
Albany, Auckland, 0632
New Zealand

info.nz@assaabloy.com
Telephone +64 9415 7111
assaabloy.co.nz

Disclaimer

Whilst every effort has been made to ensure that the information (including product images and drawings) contained in this brochure is accurate at the time of publication, ASSA ABLOY Australia Pty Limited ("ASSA ABLOY") recommends that you consult ASSA ABLOY or its agents prior to placing an order to ascertain current information on specific products, as ASSA ABLOY reserves the right to make changes without notice. ASSA ABLOY will not be liable for any injury, loss or damage whatsoever, arising from any errors or omissions in the information contained in the brochure or arising from the use or application of the information contained herein. © 2024 copyright by ASSA ABLOY All rights reserved

